

# Category 6 Toolless UTP 48port 2u Patchpanel

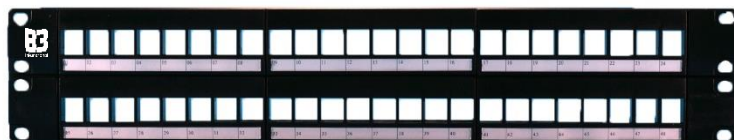


PP-1 | 16-48

## Applications

Suitable for Local Area Networks, Data Centre and Video Applications delivering 1000base-t Gigabit Ethernet, 100BASE-TX Fast Ethernet, 622 Mbps ATM, 155 Mbps ATM and Composite Video. The patchpanel comes with 48pc Keystone jack, cable ties and mounting hardware. The Toolless Keystonejack is terminated without the use of regular punch down tools.

## Product Picture



## Environmental Conditions

Relative Humidity (Operational)	Temperature	
	Storage	Operational
Maximum Non Condensing 93%	-40 to +70°C	-10 to +60°C

## Electrical Characteristics

Electrical Insulation Resistance	Dielectric Withstanding Voltage	Contact Resistance	
		Spring Wire	IDC
Min. 500 MΩ at 100Vd.c.	1000V RMS 60Hz for 1 minute	Max. 20mΩ	Max. 2.5mΩ

## Mechanical Characteristics

Retention	Insertion/Extraction Life	IDC Wire Gauge	Wiring Scheme
50N for 60s±5s	Min. 750 Cycles	22-24AWG	Labeled T568A & T568B

# Category 6 Toolless UTP 48port 2u Patchpanel



PP-1 | 16-48

## Physical Characteristics

Keystone Jack Housing	Spring Wire	IDC	Panel
High-Impact, Flame-Retardant Plastic	Phosphor Bronze Alloy plated with 50µ Inch of Gold	Phosphor Bronze Alloy with 100µ Inch of Sn Alloy	High Impact Flame Retardant Plastic and 1.5mm CRS

## Typical Performance Test Data

Frequency (MHz)	Min. Return Loss (dB)	Max. Insertion Loss (dB)	Min. NEXT (dB)
1	30.0	0.10	75.0
4	30.0	0.10	75.0
8	30.0	0.10	75.0
10	30.0	0.10	74.0
16	30.0	0.10	69.9
20	30.0	0.10	68.0
25	30.0	0.10	66.0
31.25	30.0	0.11	64.1
62.5	28.1	0.16	58.1
100	24.0	0.20	54.0
200	18.0	0.28	48.0
250	16.0	0.32	46.0

## Reference Standards

ISO/IEC 11801
ANSI/TIA/EIA-568-C2 Category 6 Connecting Hardware
EN50173-1
UL94V-0
IEC 60603-7-4
UL1863
RoHS directives