

# Cat5e FTP 24port PCB Panel

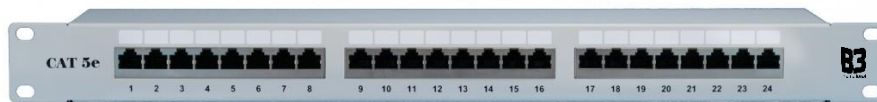


PP-1235-24

## Applications

Suitable for Local Area Networks, Data Centre and Video Applications delivering 1000base-t Gigabit Ethernet, 100BASE-TX Fast Ethernet, 622 Mbps ATM, 155 Mbps ATM and Composite Video. Termination with punch down tool.

## Product Picture



## Environmental Conditions

Relative Humidity (Operational)	Temperature	
	Storage	Operational
Maximum Non Condensing 93%	-40 to +70°C	-10 to +60°C

## Electrical Characteristics

Electrical Insulation Resistance	Rating	Dielectric Withstanding Voltage	Contact Resistance	
			Spring Wire	IDC
Min. 500 MΩ at 100Vd.c.	1.5 AMPS at 20°C	1000V RMS 60Hz for 1 minute	Max. 20mΩ	<0.5 mΩ

## Mechanical Characteristics

Insertion/Extraction Life	IDC Wire Gauge	Wiring Scheme
Min. 750 Cycles	22-24AWG	Labelled T568A & T568B

PP-1235-24

## Physical Characteristics

Material	Spring Wire	IDC
CRS	Phosphor Bronze Alloy plated with 50 $\mu$ Inch of Gold	Phosphor Bronze Alloy with 100 $\mu$ Inch of Sn Alloy

## Typical Performance Test Data

Frequency (MHz)	Min. Return Loss (dB)	Max. Insertion Loss (dB)	Min. NEXT (dB)
1	30.0	0.10	65.0
4	30.0	0.10	65.0
8	30.0	0.11	64.9
10	30.0	0.13	63.0
16	30.0	0.16	58.9
20	30.0	0.18	57.0
25	30.0	0.20	55.0
31.25	30.0	0.22	53.1
62.5	24.1	0.32	47.1
100	20.0	0.40	43.0

## Reference Standards

ISO/IEC 11801
ANSI/TIA/EIA-568-C2 Connecting Hardware
EN50173-1
UL94V-0
IEC 60603-7-3
UL1863
RoHS directives